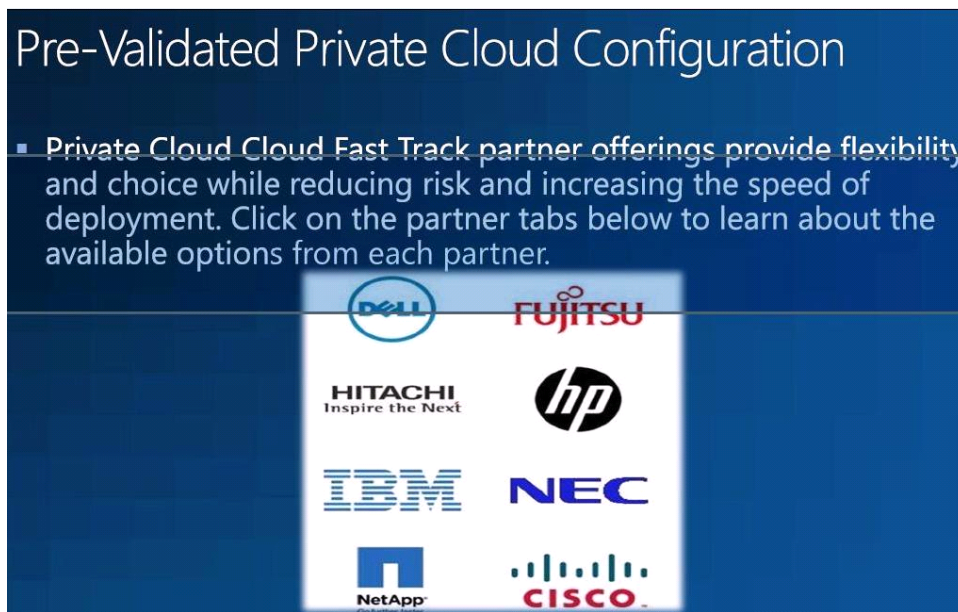


Jeremy Li
March, 2012

Credit: Cloud Intelligence Technology Conferences - <http://www.intelligence-conferences.com/>

1. Microsoft Pre-Validated Private Cloud Configuration:

Microsoft has been purchasing PB storages through multi-vendor approach method, listed in the screen shot below, and validated the following storage vendors' products. Microsoft wants its customers worry free when it is a time buying storage for a private cloud.



2. IDC predicts that 2012 will be VMware's last year as king of the hill

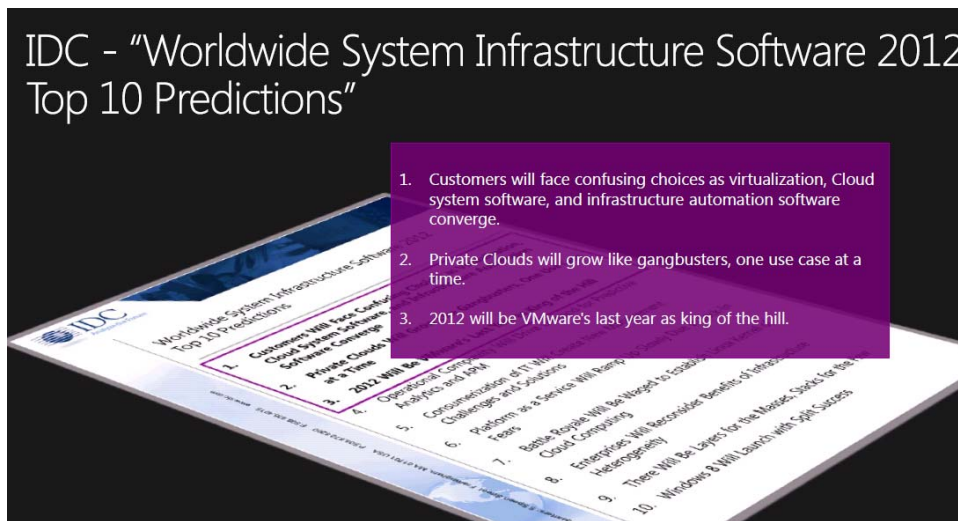


Figure 1 Source: IDC, Dec 2011, "IDC Worldwide System Infrastructure Software 2012 Top Predictions Report"

3. The Evolution of Hyper-V Continues with Hyper-V 3.0

The Evolution of Hyper-V Continues...

Feature	Hyper-V R2 SP1	Hyper-V 3.0	vSphere 5
x64 CPUs	64 logical	160 logical	160 logical
x64 Host Memory	1TB	2TB	2TB
Maximum VMs per Host	384	512+	512
Guest Memory	64 GB	512GB	1TB
Memory over-commit, page sharing, ballooning	Yes – SP1 Dynamic Memory Feature	Yes – Dynamic Memory	Yes
64-bit VMs	Yes	Yes	Yes
vSMP VMs	4-way	32-way	32-way
Physical Machines per Cluster	16 hosts	63 hosts	32 hosts
Virtual Machines per Cluster	1,000	4,000	3,000
Highly Available VMs	Yes	Yes	Yes
Live Migration	Yes	Yes (Without Shared Storage)	VMotion [§]
Storage Migration	Yes	Yes	Storage vMotion [§]
Concurrent shared disk in cluster	Yes	Yes	Yes
Native VM Replication	No	Yes- Hyper-V Replicator	No
Maximum VM Disk Size	2TB	16TB	2TB
Supported in SCVMM	Yes	Yes	Virtual Center*

Figure 2 Note: Windows 8 will come with Hyper-V 3.0

4. Microsoft Continues as the Value Leader

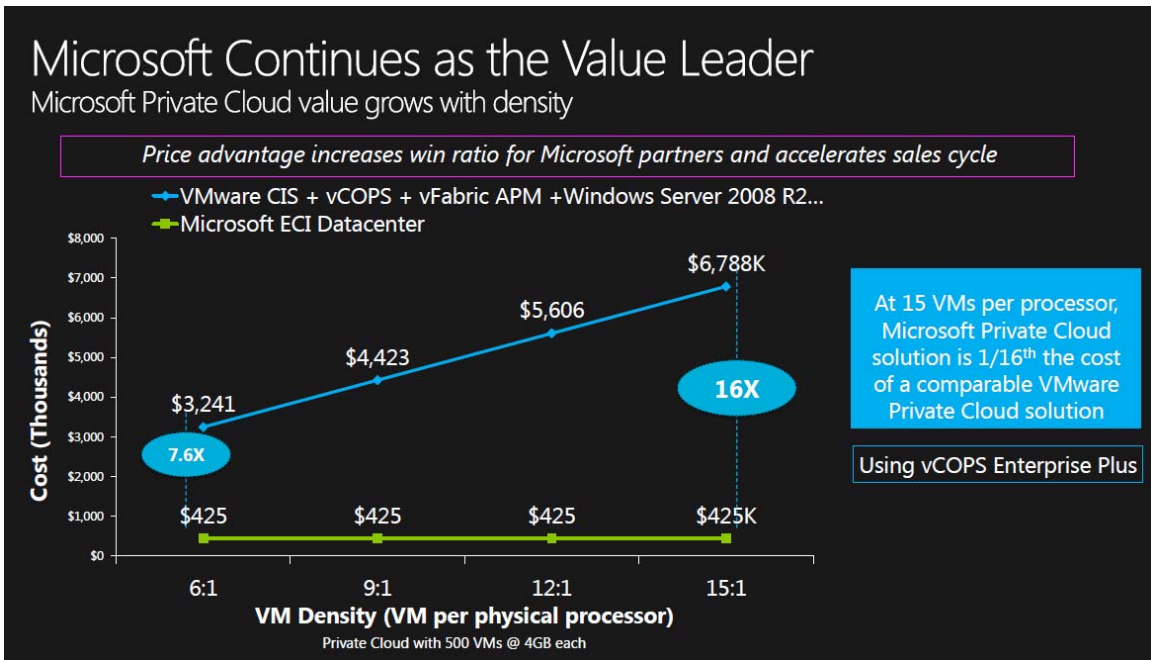



Figure 3 Microsoft Hyper-V License vs. VMware Enterprise Plus License





5. Microsoft Top 10 Data Centers –

Really Big Datacenters



Here's our list of the Ten Largest Data Centers, with links to more information about each facility:

- 10. The SuperNAP, Las Vegas (Switch Communications)
- 9A and 9B. Microsoft Data Centers in Quincy Washington and San Antonio
- 8. CH1, Elk Grove Village, Ill. (DuPont Fabros)
- 7. Phoenix ONE, Phoenix (i/o Data Centers)
- 6. Microsoft Dublin (Microsoft)
- 5. Container Data Center, Chicago (Microsoft)
- 4. NGD Europe, Newport Wales (Next Generation Data)
- 3. The NAP of the Americas, Miami (Terremark)
- 2. Metro Technology Center, Atlanta (Quality Technology)
- 1. 350 East Cermak / Lakeside Technology Center (Digital Realty)



6. Microsoft Azure – Public Cloud

<http://www.windowsazure.com/en-us/home/features/overview/>

7. Microsoft upcoming System Center 2010 Capabilities Overview

<http://www.microsoft.com/en-us/server-cloud/system-center/datacenter-management-capabilities.aspx>